

These sound projectors made of ABS plastic and aluminium are designed to precisely control the orientation of the sound.

They all feature an axial cone woofer (full range), a wide frequency range and a SPL system which improves sound orientation. Their transformer makes them suitable for several type of installations. They are particularly adequate for areas with important background noise like train stations and airports.

Technical data	CS 323 T / CS 310 T	CS 306 T / CS 303 T
Type:	Full range sound projector.	Full range sound projector.
Elements:	6,5" woofer.	5" woofer.
Power taps (100 V line):	20 W (500 Ω) / 10 W (1k Ω) / 5 W (2k Ω).	10 W (1 kΩ) / 5 W (2 kΩ) / 2,5 W (4 kΩ).
(*) Power taps (70 V line):	10 W (490 Ω) / 5 W (980 Ω) / 2,5 W (1k96 Ω).	5 W (980 Ω) / 2,5 W (1k96 Ω) / 1,25 W (3k9 Ω).
Frequency response:	110 Hz - 15 kHz.	130 Hz - 15 kHz.
Sensitivity (1W/1m):	92 dB.	91 dB.
Max. SPL:	108 dB.	101 dB.
IP range:	CS 323 T: IP 55. CS 310 T: IP 54	CS 306 T: IP 55. CS 303 T: IP 54.
RAL colour code:	9016.	9016.
Material (housing):	CS 323 T: ABS plastic. CS 310 T: Aluminium.	CS 306 T: ABS plastic. CS 303 T: Aluminium.
Material (grille):	CS 323 T: Aluminium. CS 310 T: Steel.	CS 306 T: Aluminium. CS 303 T: Steel.
Dimensions:	CS 323 T: Ø 170 x 245 mm. CS 310 T: Ø 170 x 252 mm.	CS 306 T: Ø 138 x 205 mm. CS 303 T: Ø 138 x 205 mm.
Weight:	CS 323 T: 1.6 kg. CS 310 T: 2.8 kg.	CS 306 T: 1.6 kg. CS 303 T: 2.2 kg.

(*) The power taps indicated on the selector switch are calculated for 100V line. In the case of 70V line installation, each power tap will correspond to half the value.

Features

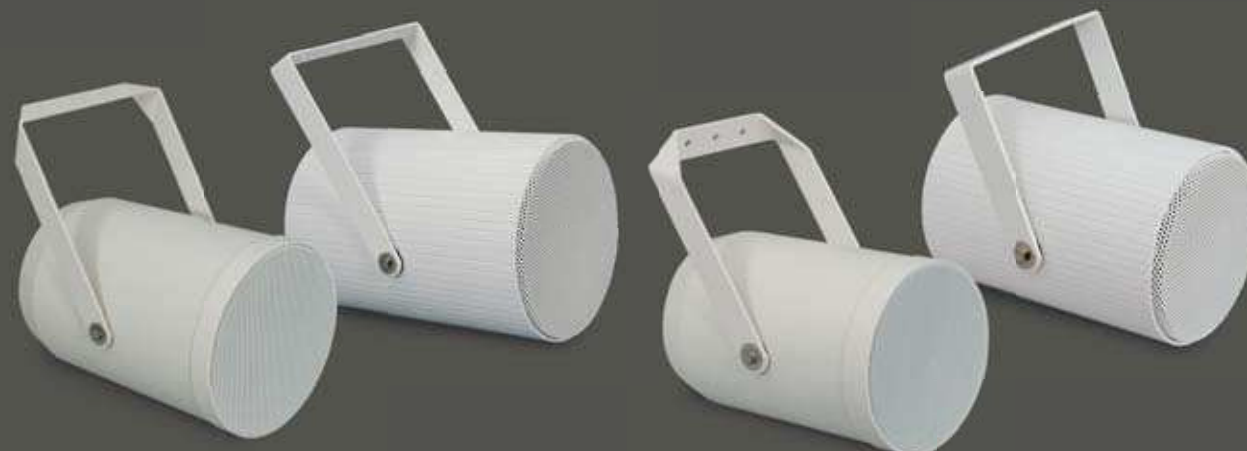
- Sound projector with a cylindrical shape.
- Axial cone woofer (full range).
- SPL system, improving sound orientation.
- Suitable for high impedance (with 100V passive crossover) voltage line installations.
- Recommended for areas with important background music (e.g. train stations, airports).

CS 323 T
Sound projector

CS 310 T
Sound projector

CS 306 T
Sound projector

CS 303 T
Sound projector



Technical data	CS 601 / CS 602
Type:	CS 601: Unidirectional projector. CS 602: Bidirectional projector.
Frequency response:	130 Hz -15 kHz.
Sensitivity (1W/1m):	91 + 3 dB.
Max. SPL.:	100 dB @ 10 W (100V).
Power handling:	CS 601: 10 W. CS 602: 12 W.
Selectable power:	CS 601: 2,5 W/5 W/10 W. CS 602: 3 W/6 W/12 W.
Input level:	100 V.
IP range:	IP 55.
Speaker:	CS 601: 5" full range. CS 602: 2x 5" full range.
Color:	RAL 9016 white.
Dimensions (LxØ):	CS 601: 205 x 138 mm. CS 602: 200 x 138 mm.
Weight:	CS 601: 1.5 kg. CS 602: 1.7 kg.



CS 601

CS 602

CS 601 / CS 602
Sound projectors

New projectors **CS 601** and **CS 602** have been designed for installations where a good sound response and smart look are requested as well indoor as outdoor applications with IP 55 protection. Transformer included for high impedance (100 V) and 3 power selectors 2,5 W / 5 W / 10 W.

CS 601 has a full range 5 position speaker in one way and **CS 602** has two of these speakers back to back in order to project in opposite sides.

Features

- Audio projectors for indoors and outdoors.
- IP 55 protection.
- Two configurations> unidirectional (CS 601) and bidirectional (CS 602).
- Designed for (100 V) high impedance installations.
- 3 selection powers 2,5W/5W/10W.